

**WILLIAM SHAKESPEARE'S**

**THE TEMPEST**

**DIRECTED BY NIKE DOUKAS**  
**JUNE 11 - JULY 17, 2023**



*Peter Van Norden, Photo by Frank Ishman.*

## Antaeus Leadership Note



Photo by Frank Ishman

On behalf of all of us at Antaeus, welcome to the final show of our 2022/23 season, William Shakespeare's *The Tempest*. Whether it's your first time here, or if you joined us for this season's earlier productions of *Everybody* and *Love and Information*, or if you're a longtime supporter, we're so glad you're here!

After several years of extremely difficult circumstances for theaters across Los Angeles and the entire country, it feels like a moment to celebrate that we are still here, healthy and sound, and eager to continue exploring the Classic and original works that inspire the Antaeus community – artist and patron alike. How lucky we are to be sitting in this beautiful, intimate space together!

We hope *The Tempest* will lead you, as it has us, to examine the timely and timeless themes of forgiveness and fresh starts, and to marvel, "How beauteous mankind is!"

And then, please join us in exploring our own "brave new world" – the four plays of our 2023/24 season: the world premiere of Antaeus Playwrights Lab member and NEXT Commission playwright Marlow Wyatt's *SHE*; Shakespeare's epic romance *The Winter's Tale*; Ingmar Bergman's adaptation of Ibsen's *A Doll's House, Nora*; and Oscar Wilde's "Trivial Comedy for Serious People," *The Importance of Being Earnest*.

We look forward to spending many more productions, seasons, and years with you!

Now please enjoy the magic of *The Tempest*.

Cheers!

Bill Brochtrup  
Artistic Director

Ana Rose O'Halloran  
Producing Executive Director

Antaeus Theatre Company Presents

# The Tempest

By William Shakespeare

Directed by Nike Doukas

Scenic Designer

Angela Balogh Calin\*\*

Lighting Designer

Vickie J. Scott\*\*

Foley Designer

Jeff Gardner & Nike Doukas

Props Designer

Shen Heckel

Production Stage Manager

Claire Fogle

Costume Designer

Julie Keen\*\*

Sound Designer

Jeff Gardner\*\*

Composer

John Ballinger

Assistant Director

Kaite Brandt

Assistant Stage Manager

Talya Camras

Vocal Captain

John Allee

Ensemble

Bernard K. Addison\*, John Allee\*, JD Cullum\*, Elinor Gunn\*,  
John Harvey, Adrian LaTourelle\*, Sandra McClain\*, Peter Mendoza\*,  
Erin Pineda\*, Anja Racić, Peter Van Norden\*



*\*Member, Actors' Equity Association, the union of professional Actors and Stage Managers in the United States. This production is presented under the auspices of the Actors' Equity Los Angeles Membership Company Rule.*



The Director and Choreographer are members of the **STAGE DIRECTORS AND CHOREOGRAPHERS SOCIETY**, a national theatrical labor union.



The Designers at this Theatre are Represented by **United Scenic Artists - Local USA 829** of the International Alliance of Theatrical Stage Employees

\*\*

The video and/or audio recording of this performance by any means whatsoever is strictly prohibited.

## Director's Note

For me, theater works best when it embraces what makes it unique. Theater can't have close-ups, or panoramic shots, or real waves crashing on the shore and seagulls flying through the air. Theater can't be literal. What theater has instead, is the audience's willing suspension of disbelief: we are all pretending that the actors onstage are truly experiencing not just their emotional lives, but also all the physical elements of their environment. When the artists get it right, when the story is vividly told through the emotional technique of the actors and the stagecraft of the designers, the audience is able to actively participate, first and foremost by their agreement to enter into the world onstage. Like the actors, the audience agrees to pretend. Or maybe they are seduced into believing what they know is a pretense.

When Bill and Ana Rose asked me to direct a Shakespeare play for the 2022/23 Season, *The Tempest* was my first thought. The play feels right for our time: powerful political forces jockeying for control, combined with that ever-relevant theme of familial wounds that never heal. Most scholars believe this was the last play Shakespeare wrote without a partner, and it also seems in many ways like an end-of-life reflection, and a farewell of sorts. Of course, Shakespeare being Shakespeare, the play is stuffed full. We also get doses of great joy, youthful hope, first love, vaudevillian clowning, drunkenness, and murderous scheming. The play is FUN.

I had directed *The Tempest* once before, and an idea about how to approach it a second time had long been simmering in my mind. The challenge was: how to tell the story of a magical island on our stage in a theatrical way. The island seems to have a power that reveals people's true natures. There are spells cast, mysterious presences, and there is more music than all other of Shakespeare's plays. Over and over, the characters describe the sounds and sights of the island, they marvel, they wonder, they try to identify its strange forces. How could we make you believe and embrace all this vivid imagery, this magic and music and mystery? How could we seduce you into suspending your disbelief, when the requirements of the play are so fantastical?

For our version of *The Tempest*, you'll be seeing the culmination of a highly collaborative process between myself, and our extraordinary ensemble of actors and team of designers. Together, we have imagined the specifics of an exotic world. Our creative approach has felt child-like. We've stretched our imaginations, and sense of wonder and possibility. We've pretended. My hope is that through the magic of theater and pretend, there will be moments when you see the actors and all their emotions in close-up, revel in panoramic visions, feel the spray of waves crashing on the shores, and hear birds flying through the air.

Nike Doukas, Director *The Tempest*

# The Tempest

## Cast of Characters

ANTONIO Bernard K. Addison  
SEBASTIAN/PIANO John Allee  
CALIBAN/GUITAR JD Cullum  
ARIEL Elinor Gunn  
FRANCISCO/PERCUSSIONIST John Harvey  
ALONSO/STEPHANO Adrian LaTourelle  
GONZALA Sandra McClain  
FERDINAND Peter Mendoza  
TRINCULA Erin Pineda  
MIRANDA Anja Racić  
PROSPERO Peter Van Norden

## Special Thanks

Mark Holden and The Invisible Studios  
A Noise Within

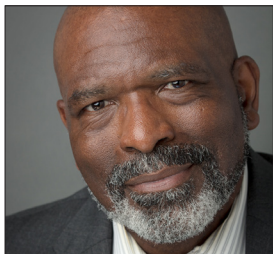
---

## Land Acknowledgement

Antaeus Theatre Company acknowledges the Gabrielino-Tongva peoples as the traditional caretakers of the land in the Los Angeles basin where Antaeus is located. We pay our respect to the Ancestors, Elders, and Relations – past, present, and emerging.



# ENSEMBLE - THE TEMPEST



Bernard K. Addison



John Allee



JD Cullum



Elinor Gunn



John Harvey



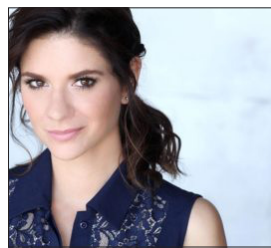
Adrian LaTourelle



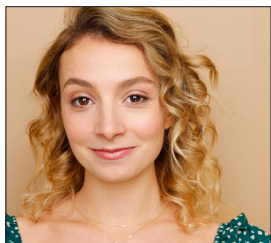
Sandra McClain



Peter Mendoza



Erin Pineda



Anja Racić



Peter Van Norden

# CAST

## **BERNARD K. ADDISON (ANTONIO):**

At ANTAEUS: *As You Like It*, *The Curse of Oedipus*. Recent: *King of France*, *All's Well That Ends Well* (A Noise Within). LA: *Chutes&Ladders*, *Water by the Spoonful* (Mark Taper Forum); *Citizen: An American Lyric* (Kirk Douglas Theatre); *Romeo and Juliet* (Ahmanson Theatre); *Solly Two Kings*, *Gem of the Ocean* (u/s, A Noise Within); *Off the Rails* (Native Voices); *Prometheus Bound* (Getty Villa); *Citizen: An American Lyric*, *The Ballad of Emmett Till*, *Joe Turner's Come and Gone* (Fountain Theatre); *Mother Courage* (Boston Court Pasadena). Regional: *Ghost/Claudius* in *Hamlet* and *Bottom* in *A Midsummer Night's Dream* (Shakespeare Santa Cruz); *Joe Turner's Come and Gone* (The Lorraine Hansberry Theatre in San Francisco); *Henry V* and *The Man Who Came to Dinner* (Oregon Shakespeare Festival); *Othello* (California Shakespeare Festival); The Denver Theatre Center; Actors Theatre of Louisville; Long Wharf Theatre; the Shakespeare Theatre (DC); and PlayMakers Rep. New York: Broadway (*Electra*). Film: *Celebrity*, *The Farm*. Recent TV: *Call Me Kat*, *Modern Family*, *Rake*. Awards: Ovation and LADCC for Acting Ensemble: *The Ballad of Emmett Till*.

## **JOHN ALLEE (SEBASTIAN/PIANO/ VOCAL CAPTAIN):**

is an Ovation Award nominee and ensemble member of ANTAEUS, where he has appeared in *The Cripple of Inishmaan*, *Cloud 9*, *Uncle Vanya*, *The Crucible*, *You Can't Take It with You*, *Peace in Our Time*, *The Malcontent*, and more. Other stage

highlights: *The Mystery of Irma Vep*, *A Man for All Seasons*, *The Man Who Came to Dinner*, *33 Variations* (Actors Co-op); *Much Ado About Nothing* (Kingsmen Shakespeare Co); *Little Shop of Horrors* (Arizona Theatre Company); *Assassins* (Los Angeles Theatre Center); *Alone Together* (Pasadena Playhouse); *A Midsummer Night's Dream* (LA Opera, San Francisco Opera, Houston Grand Opera); *One Thousand Cranes* (Mark Taper Forum); *Chaplin* (Pre-Broadway). On TV, he played Pasha on the Starz series *Flesh and Bone*. Podcast audiences can hear him on *Two Dead Girls in Jubeliene*. John is also an award-winning singer-songwriter and recording artist. His latest album is *Past Imperfect*. [Johnallee.com](http://Johnallee.com)

## **JD CULLUM (CALIBAN/GUITAR):**

A veteran of Southern California theater, JD is happy to return to ANTAEUS, where as a member since 1992, he has appeared in numerous productions, including most recently *The Cripple of Inishmaan* and *The Hothouse*. He has starred in productions at the Mark Taper Forum, Geffen Playhouse, Kirk Douglas Theater, Pasadena Playhouse, South Coast Repertory, Laguna Playhouse and A Noise Within. Other recent appearances include *The Seafarer*, and *Clybourne Park* (Laguna Playhouse). On camera: *CSI: Los Angeles*, *The Orville*, *Aquarius*, *Code Black*, *Bones*. He appears in the upcoming series *Ted*.

**ELINOR GUNN (ARIEL):** is honored to make her ANTAEUS debut. Notably, she has worked with Sir Alan Ayckbourn in the American premiere of *Sugar Daddies* at ACT Theatre in Seattle, and Paula

Vogel in the inaugural Hearst Theater Lab Initiative Distinguished Visiting Playwright-in-Residence at UCLA. Favorite roles include Kyra in *Skylight* at ACT, Michelle in *For the Love Of* at the Kirk Douglas Theatre, and Raina in *Arms and the Man* at The Jewel Theatre, also directed by Nike Doukas. Her most recent TV credits include guest starring on *9-1-1* (Fox) and *Legacies* (CW), co-starring on *The Dropout* and *Bust Down*, and appearing in several national commercials.

**JOHN HARVEY (FRANCISCO/**

**PERCUSSIONIST):** John has played in many productions including *Assassins* at LATC, *In Trousers* L.A+NY, *Working* at The Skirball for NPR, *Nonsense* at La Mirada with Joanne Worley. John tours regularly with Laura Ellis and just finished recording John Allee's (Sebastian) latest album *Past Imperfect*.

**ADRIAN LATOURELLE (ALONSO/**

**STEPHANO):** has appeared in numerous television series such as *NCIS*, *Castle*, *The Legend of Korra*, *Last Resort*, *The Closer*, *House*, *NCIS:LA*, *Boston Legal*, *Without a Trace*, *Criminal Minds*, *Numbers*, *Sons of Anarchy*, and *Days of Our Lives*. His many stage credits include work in some of the best theaters in the country, such as the Mark Taper Forum, the Shakespeare Theater in DC, The Old Globe, the San Jose Rep, the Dallas Theater Center, ANTAEUS, and the Yale Repertory Theater. Adrian has also worked abroad, performing in theater and film in Russia and the Netherlands.

**SAUNDRA MCCLAIN (GONZALA):**

Ms. McClain has worked in all aspects of the theater discipline, recurred and

guest starred on TV and numerous films. Two-time Ovation Award, LA Drama Critics Award, and NAACP Theatre Award nominee for *Wedding Band* and *A Raisin in the Sun*. Has worked at such notable theaters as The Kennedy Center, the Shakespeare Theatre in D.C., Shakespeare Santa Cruz, Alliance Theatre, Alley Theatre, Philadelphia Drama Guild, Two River Theatre, Musical Theatre West, Syracuse Stage, McCarter Theatre, A.R.T., Spoleto Festival, New York Shakespeare Theatre, 2nd Stage, N.E.C., New Federal Theatre, Classic Stage Company, Hudson Guild, Billie Holiday Theatre, Coconut Grove, A Noise Within. Directorial credits include: *The Play that Goes Wrong*, *Cabaret*, *Spring Awakening*, *Ain't Misbehavin'*, *Breath and Imagination*, *Flyin' West*, *Spunk*, *Crumbs from the Table of Joy*, *The Colored Museum*, *For Colored Girls*, *Dancing Lessons*, *Intimate Apparel*, *Frankie and Johnny in the Clair de Lune*, *The Fantasticks*, and *In the Continuum*.

**PETER MENDOZA (FERDINAND):** was

born and raised in East Los Angeles. He studied theater, stage combat, and dance at East Los Angeles College. Theater: Center Theatre Group: Oscar in *Sweat* (Mark Taper Forum), Elliot in *Elliot*, *A Soldiers Fugue* (Kirk Douglas Theatre), Oedipus in *Oedipus El Rey* (Kirk Douglas Theatre, Digital Stage), Henry Reyna in *Zoot Suit* (Mark Taper Forum, U/S). Other Theater: Hason in *Mojada: A Medea in Los Angeles* (The Rep. Theatre of St. Louis), Belyaev in *Three Days in the Country* (ANTAEUS), Rafael in *La Piedra Oscura*, Don Carlos in *Los Empeños de una Casa*, Paco in *Salon Mexico*, Don Juan Tenorio in *El Burlador*



*de Sevilla* (Bilingual Foundation of the Arts). TV: *Perry Mason* (HBO), *From Scratch* (Netflix), *Shooter* (USA), *NCIS* (CBS), *Snowfall* (FX), *Casual* (HULU), *On My Block* (Netflix). Film: *Dead Bullet*, *Nathan's Kingdom*, *Parasites*, *Tecato*, *Hello to Never*, *Ana Maria in Novella Land*.

**ERIN PINEDA (TRINCULA):** At

ANTAEUS: *Love and Information, As You Like It*. Other Theater: *Worst Laid Plans* (Upright Citizens Brigade, co-creator); *My Break-Up Playlist* (Rogue Machine Theatre, writer/performer); *Bunny Bunny* (The Garry Marshall Theatre); *The Glass Menagerie* (Ensemble Theatre Company); Neil LaBute's *Filthy Talk for Troubled Times* (UK premiere). Film/TV: She's currently recurring in Apple TV's *Physical* (Season 1, 2 and 3) and Freeform's *Good Trouble* (Season 5). And she just finished shooting *Jumpstart*, a new pilot for CBS. Rest of credits, visit IMDB. Training: B.F.A. NYU's Tisch School of the Arts, The Meisner Studio, Experimental Theatre Wing and the Royal Academy of Dramatic Arts.

**ANJA RACIĆ (MIRANDA):** Anja is a Serbian actor, singer, dancer and writer. Anja is thrilled to be working with ANTAEUS. Other Theater: *The Tempest* (Shakespeare Center of LA/After Hours Theatre Company); *Louder* (Stage Reading, Boston Court Pasadena); *A Midsummer Night's Dream* and *Indecent* (the Art of Acting Studio); *As You Like It* (RADA). Last summer, Anja premiered her original solo show, *Steps of Glory*, for which she received two nominations at the Hollywood Fringe Festival. Keep your eyes peeled for Anja's debut film *Cake* in the festival circuit this summer.

Education: Professional Conservatory at the Art of Acting Studio, Stella Adler NYC & Royal Academy of Dramatic Arts. Hugely grateful to the cast and crew of *The Tempest*, my family, friends and mentors. Enjoy the show! IG: @racicanja

**PETER VAN NORDEN (PROSPERO):**

has appeared in Antaeus productions of *Hamlet* (Drama Critics Circle), *The Hothouse* (2019 Ovation Award for Best Actor), *Macbeth*, *The Liar*, *American Tales*, *The Man Who Had All The Luck*, and *The Zip Code Plays*. Other recent appearances include: *The Tempest*, *An Interactive Production* at Shakespeare Center LA (where he also covered and performed for Tom Hanks as 'Falstaff' in *Henry IV, Parts I and II*); *Red Ink* at Playwrights Arena (2020 Ovation Award nomination); *1776 and Singin' in the Rain* at La Mirada Theater; and for three years as 'Ebenezer Scrooge' in *A Christmas Carol* at the Rubicon Theatre Company. In his native NYC he appeared in *Little Johnny Jones* (with Donny Osmond), *Hamlet* (with both Kevin Kline and Sam Waterston), *Jungle of Cities* (with Al Pacino), *Henry V* (with Meryl Streep), and *Saint Joan* (with Lynn Redgrave). His many regional theater appearances include the lead roles in both George Bernard Shaw's *Major Barbara* (at San Jose Rep) and *Misalliance* (at Center Stage, Baltimore). Peter was the first American actor to appear in the title role of Mike Bartlett's *King Charles III* at Arizona Theatre Company (where he also appeared in Neil Simon's *The Sunshine Boys*). Film and TV roles include leads in *The Accused* (opposite Oscar winner, Jodie Foster), *Police Academy 2* (as Steve

Guttenberg's inept partner), *The Naked Gun 2 1/2*, and the Stephen King mini-series, *The Stand*. [petervannorden.com](http://petervannorden.com)

## PRODUCTION

**NIKE DOUKAS (DIRECTOR):** joined ANTAEUS in 1992. Since then she has performed in *The Wood Demon*, *The Liar*, *Patience*, *Tonight at 8:30*, *Cousin Bette*, *Hedda Gabler*, *Three Days in the Country*, and in countless readings. For Antaeus she directed *The Hothouse*, readings of *Flare Path*, *Blithe Spirit*, *The Boatman*, *Heartbreak House*, and *The Three Sisters*. Other directing credits include: *Selling Kabul* (Ensemble Theatre Company), *All's Well That Ends Well* (A Noise Within), *The Outgoing Tide* (North Coast Rep), *Arms and the Man* (The Jewel Theatre), *UnRaveled* (produced online by the Global Brain Institute), *Red Ink* (Playwright's Arena), *King Lear* (the Harold Clurman Theatre), and *The Marriage Proposal* (PICT Classical Theatre). As an actor, she has appeared at South Coast Rep, The Mark Taper Forum, The Old Globe, Ensemble Theatre Company, GEVA Theatre, The American Conservatory Theatre (MFA), The Jewel Theatre, Berkeley Repertory Theatre, Santa Cruz Shakespeare, and Shakespeare Center, LA, among others.

**BILL BROCHTRUP (ARTISTIC DIRECTOR):** At ANTAEUS: *Cloud 9*, *Mrs. Warren's Profession*, *Peace In Our Time*, *The Malcontent*, *Cousin Bette*, *Tonight at 8:30*, *Pera Palas*. Other local Theaters: Geffen Playhouse, South Coast Repertory, Ensemble Theatre Company, Pasadena Playhouse, The

Fountain Theatre, Boston Court Pasadena, Rogue Machine Theatre, L.A. Theatre Works. Film: *Life as We Know It*, *He's Just Not That into You*, *Ravenous*, *Hypnotized*. TV series regular: "John Irvin" on *NYPD Blue*, *Public Morals*, *Total Security*. TV recurring: "Dr. Joe" on *Major Crimes*, *Shameless*, *After Forever*. [billbrochtrup.com](http://billbrochtrup.com)

### **ANA ROSE O'HALLORAN (PRODUCING EXECUTIVE DIRECTOR):**

Ana Rose joined ANTAEUS in 2015 and has produced over 20 productions during her tenure. Previously, she served as the Senior Director at The Pablove Foundation, and in various roles in the development department at Center Theatre Group. She received her M.F.A. in Theatre Management from California State University, Long Beach, and a B.F.A. in Theatre Management and a B.F.A. in Performance from Ohio University.

### **ANGELA BALOGH CALIN (SCENIC DESIGNER):**

At ANTAEUS: *Love and Information*, *The Caucasian Chalk Circle*, *The Liar*. Angela is a costume and set designer with over 120 productions in local and regional theaters. Credits include: *Shakespeare in Love* (Alliance Theatre, Orlando Shakespeare); *Sweet Charity* (Reprise 2/UCLA); *Mamma Mia!* (Hollywood Bowl); *Two Degrees*, *In the Upper Room* (Denver Center Theatre Company); *Outside Mullingar*, *The Whale* (South Coast Repertory); *Into the Breeches* (Chautauqua Theatre Company); *Sense and Sensibility* (Milwaukee Rep); *Othello*, *Book of Will*, *Animal Farm* (A Noise Within, resident artist). Her work has been seen at The Old Globe, Pasadena Playhouse, Georgia

Shakespeare, and various other theaters in Los Angeles. Angela's designs garnered numerous awards and recognitions from L.A Drama Critics Circle, Ovation Awards, Backstage, and Drama-Logue Awards. Angela has 16 film production credits in the US and her native Romania and she holds an M.F.A. in set and costume design from the Academy of Arts "N. Grigorescu" in Bucharest- Romania.

**JULIE KEEN (COSTUME DESIGNER):**

Julie is thrilled to be designing costumes for *The Tempest* for ANTAEUS. Previously she designed costumes for their production of *The Hothouse*. Her design credits include work at South Coast Repertory, A Noise Within, Laguna Playhouse and the Rubicon Theatre. In addition to *The Hothouse*, Julie's joyous collaborations with director Nike Doukas include *King Lear* for The Harold Clurman Laboratory Theater Company and *All's Well That Ends Well* for USC School of Drama.

**VICKIE J. SCOTT (LIGHTING**

**DESIGNER):** Vickie has created lighting and scenic designs for dance and theater productions throughout the U.S. and abroad. Her recent work includes lighting design for *Is Edward Snowden Single?* by Kate Cortesi, and the lighting & scenic design for *The Shot*, a new play about Katharine Graham, written by Robin Gerber, and *Bulletproof Unicorn* by Stacie Burrows, all in New York City, and the lighting designs for *A Great Wilderness* and *Little Theatre* at Rogue Machine in Los Angeles. She has also spent multiple seasons as the Resident Lighting Designer for the Ojai Playwrights Conference. Vickie is on the faculty at UC Santa Barbara, is a member of the Illuminating

Engineering Society, the Association for Lighting Production and Design, and is a member of United Scenic Artists Local 829. Her book *Contemporary Dance Lighting: The Poetry and the Nitty-Gritty*, co-authored with Carol M. Pressed, was published in September, 2022.

**JEFF GARDNER (SOUND DESIGNER):**

Jeff is an award-winning sound designer, Foley artist and actor. Jeff has designed and performed throughout the country. At ANTAEUS: *The Zip Code Radio Plays, Eight Nights, The Abuelas, Native Son, The Caucasian Chalk Circle, Diana of Dobson's, The Cripple of Inishmaan, The Little Foxes, The Hothouse, Cat on a Hot Tin Roof, Top Girls, Picnic, Wedding Band, The Crucible, The Seagull.*

Other Theaters: Denver Center for the Performing Arts, Williamstown Theatre Festival, Cleveland Playhouse, Baltimore Center Stage, The Shakespeare Theatre (DC), Arena Stage, The Kennedy Center, Edinburgh Festival Fringe, Mark Taper Forum, Geffen Playhouse, The Kirk Douglas Theatre, The Wallis Annenberg Center, Pasadena Playhouse, A Noise Within, Boston Court Pasadena, Circle X Theatre, Echo Theater, IAMA Theatre, Rogue Machine, Skylight Theatre. Los Angeles Stage Alliance Ovation Awards, Stage Raw and LA Drama Critics Circle Award Winner. Jeff can be seen at L.A. Theatre Works where he regularly performs live sound effects. [Jeffthomasgardner.net](http://Jeffthomasgardner.net)

**JOHN BALLINGER (COMPOSER):** is

an award-winning musician, composer, and musical director based in Los Angeles. For theater he has composed, created sound design, and played in pits and/or musically directed for over

100 productions on both coasts. Venues include The Geffen, South Coast Rep, Theatre @ Boston Court, Ford Theatre, Broadwater, La Mirada, San Diego Rep, Signature Theatre/The New Group (NY). As a multi-instrumentalist/singer he has toured, performed, or recorded with Moira Smiley, Rufus Wainwright, Van Dyke Parks, Eric Whitacre, O-Lan Jones, and the L.A. Master Chorale. Clients served as a commercial composer include MTV, VH1, ABC, CBS, NBC, Universal Cartoons, Badlands Features, and Comedy Central. At CalArts John studied 20th Century and electronic music composition with Mel Powell, Leonard Stein, and Rand Steiger. Recent film work includes the score and songs for the feature film *3 Days With Dad*, starring Brian Denehy, Tom Arnold, and Leslie Ann Warren, and playing guitar, clarinet, and percussion on the score to Sean Penn's latest feature *Flag Day*. John is both a graduate of and professor at Cal State Los Angeles.

**SHEN HECKEL (PROPS DESIGNER):**

"Shen" Stephen Heckel - A graduate of UCLA Theatre Film and Television School and Lincoln Center Director's Lab, he has worked on countless theater productions, live events, film and commercial work. He has worked with After Hours Theater Company as a producer, production manager and prop designer of *Tempest: The Immersive Experience*, *The Last Five Years: The Immersive Experience* and *One Flew Over the Cuckoo's Nest: The Immersive Experience* and director of the VIP activation for HBO's *Warrior*. Film credit - resident production designer at Pareto Labs, prop designer and assistant art

director *Older - 5 Seconds of Summer* music video, and art department for various national TV commercials. Theater credits: prop design *Metamorphoses*, *Animal Farm*, *Radio Golf* at A Noise Within; *The Children* and *Hype Man* at The Fountain Theatre; and *The Little Theatre* at Rogue Machine. Assistant director *Allegiance* at East West Players, assistant director *Rotterdam* at Center Theatre Group's Block Party, assistant director *Hostage* at The Skylight Theatre. Technical director of *Accommodations* at the Odyssey.

**KAITE BRANDT (ASSISTANT DIRECTOR):**

At ANTAEUS: *Love and Information*, *Everybody*, *Hamlet*, *Measure for Measure*. Other Theater: *Julius Caesar* (Warriors for Peace); *Much Ado About Nothing*, *A Midsummer Night's Dream*, *Love's Labour's Lost* (Sierra Madre Shakespeare Festival); *Love's Labour's Lost* (Chase What Flies); *Much Ado About Nothing* (The Unlikely Shakespeare Company). Video Games: The Big Con, Fossil Echo, Almightree: The Last Giver. Training: B.A. in Directing, Columbia College Hollywood

**CLAIRE FOGLE (PRODUCTION STAGE MANAGER):**

(she/her) is thrilled to be joining Antaeus for her first production with the company! Claire was born and raised a military brat, and has enjoyed traveling and working all over the globe, including England, Germany, and many years spent in Florida. Claire's credits as a stage and events manager include projects primarily in the DC area, but extends to places such as LA, Orlando, Chicago, and the Berkshires, Massachusetts. Previous DC Credits include numerous shows with Mosaic

Theater Company, Voices of Now with Arena Stage, FLIGHT with Studio Theatre, Shhhakespeare Revue with Synetic Theater, and more.

**ZACH PHANEUF (PRODUCTION MANAGER):** Zach is an artist and filmmaker, and has worked at many theaters around the country. Credits include: *King Lear*, *Oliver!*, *Frankenstein*, *The Wild Duck*, *Julius Caesar* (Quintessence Theatre Group, Philadelphia); *The Odd Couple*, *Wait Until Dark*, *Crimes of the Heart*, *Little Shop of Horrors* (Shawnee Summer Theatre of Greene County, Indiana); original works as writer and director *Lemon Shaker Pie* and *Us and You*. Film/TV: *The Booze*, *Bets*, and *Sex That Built America*, *The Food that Built America* (The History Channel). He and his wife also produce a weekly film history

podcast exploring the film industry through the lens of the Academy Awards called Thank the Academy. Much love to Kristen. zachphaneuf.com

**TALYA CAMRAS (ASSISTANT STAGE MANAGER):** Talya graduated from California Lutheran University in 2019 with a B.A. in Communication and a minor in Technical Theatre. Stage management credits include: *The Abuelas*, *Measure for Measure* (Antaeus); *Ragtime* (5-Star Theatricals); *SpongeBob The Musical*, *Rock of Ages*, *Romeo and Juliet*, *You're A Good Man, Charlie Brown* (Milken); *The Merry Wives of Windsor*, *Richard II* (Kingsmen Shakespeare Company); *Uncovered*, *Family Matters*, *The Rest is History* (The Braid); *A Midsummer Night's Dream* (Theatricum Botanicum). Talya is thrilled to be a part of this amazing team!



*Anne Gee Byrd and Dawn Didawick in Everybody (2022), Photo by Jenny Graham.*

## Support Antaeus Today!

As a nonprofit organization, we rely on contributions for the majority of our income. Everything we do is made possible by the extraordinary generosity of this community! Donations support our productions, digital programming, reading series, subsidized ticket program, arts education, and so much more.

***Visit [antaeus.org/support-us](https://antaeus.org/support-us)  
to join our community of supporters today!***

*If you'd like to make a pledge, arrange a recurring gift, or inform us about a planned gift, please contact Producing Executive Director, Ana Rose O'Halloran, at [anarose@antaeus.org](mailto:anarose@antaeus.org) or 818.506.5436.*



---

Thank You to our Extended Family  
of Loyal Supporters

## CORPORATE SPONSORSHIP

Join other business leaders by supporting Antaeus Theatre Company's award-winning programming through sponsorship and matching gift programs.

### Corporate Sponsors

Amazon Associates

Chevron

Comcast NBC Universal

Deutsche Bank Americas Foundation

The Kroger Co. Foundation

Netflix

Pasadena International Film Festival

Paul Hastings LLP

The Walt Disney Company Foundation

YWCA of Glendale and Pasadena\*

*Based on donations made between 5/23/22-5/23/23*

*\* Gift directly supports Arts Education programming at Antaeus*

*+ Indicates monthly sustaining donor*

# PRODUCER'S CIRCLE

The Producer's Circle ensures we are never limited in our artistic pursuits on our stage. This group believes in sustained excellence and allows Antaeus to produce plays no matter the cast size or production needs.

## **\$50,000+**

Kiki & David Gindler  
The Ahmanson Foundation  
Perenchio Foundation  
State of California

## **\$25,000+**

Sonja Berggren & Patrick Seaver  
In Honor of Channing Chase with support from Daniel Saxon  
The Michael J. Connell Foundation  
The David Lee Foundation  
Los Angeles County Department of Arts and Culture  
The Ralph M. Parsons Foundation  
The Shubert Foundation  
Daniel Blinkoff & Tamlyn Tomita

## **\$15,000+**

California Arts Council  
Rosemary A. Hernandez  
National Endowment for the Arts

*Based on donations made between 5/23/22-5/23/23*  
*\* Gift directly supports Arts Education programming at Antaeus*  
*+ Indicates monthly sustaining donor*

# DIRECTOR'S CIRCLE

**The Director's Circle is a distinguished group of theater lovers who provide general operating support to Antaeus. In recognition of this support, they receive invitations to special events with Antaeus' artists.**

## **\$10,000+**

The Green Foundation  
Scott Fraser & Cathy Jurca  
Melinda Peterson & Phil Proctor+  
Debra Thompson & Lawrence Riff  
Jocelyn Towne & Simon Helberg

## **\$5,000+**

Bill Brochtrup  
Evie & John DiCiaccio  
J Robin Groves+  
Mary Lambert  
Suzy Moser  
Molly Munger & Steve English  
Anthony J. Oncidi  
Dan Putman  
Jennifer & Matthew Rowland  
Jaye Scholl & Charlie Bohlen+  
Laura A. Seigle  
Joan Pirkle Smith & Kurtwood Smith  
Mary Jo & David Volk  
Belinda & Jack Walker  
April Webster

*Based on donations made between 5/23/22-5/23/23*  
*\* Gift directly supports Arts Education programming at Antaeus*  
*+ Indicates monthly sustaining donor*

# DIRECTOR'S CIRCLE

The Director's Circle is a distinguished group of theater lovers who provide general operating support to Antaeus. In recognition of this support, they receive invitations to special events with Antaeus' artists.

## \$2,500+

Steven Warheit & Jean Christensen  
The Millikan Family+  
Michael Morrell  
Richard Nathan+  
Lloyd Roberson II & Amy Proctor  
Cara Robertson  
R. Scott Thompson  
Arlene Vidor

## \$1,500+

Amy Aquino & Drew McCoy  
F. K. Conner Baldwin  
Gigi Bermingham  
Anne Gee Byrd  
Loraine Despres & Carleton Eastlake  
Jeanie Fiskin  
Paul M Holmes+  
Melinda & Robert LeMoine+  
Susan & Robert Long  
Anna Mathias  
Kitty McNamee & Paul Lazarus  
Bruce & Valerie Merritt  
Ana Rose & Grant O'Halloran+  
Michael R. Oppenheim  
Gwynne & Robert Pine+  
Ronus Foundation  
Wendy & Peter Van Norden  
Willow Cabin Productions  
Patty Woo & Steve Poretzky

*Based on donations made between 5/23/22-5/23/23*  
*\* Gift directly supports Arts Education programming at Antaeus*  
*+ Indicates monthly sustaining donor*

# STAGE CREW

The Stage Crew community of donors support the production of great plays,  
innovative arts education outreach, and the training of the next generation of actors.

## \$1,000+

Kathy Baker & Steve Robman  
Catherine Caplin  
Debra Danner  
Dawn Didawick & Harry Groener+  
Anonymous  
Kahn Education Foundation

Robert Leventer & Jenna Blaustein  
Anne McNaughton & Dakin Matthews  
Dan Oliverio+  
Ned Schmidtke+  
Reba & Geoffrey Thomas  
Larry Title & Ellen Shavelson

## \$500+

Heather Allyn & Rob Nagle+  
Joni & Miles Benickes  
Bill Butler+  
Chancy Memorial Foundation  
Felicia Davis & Eric Gutshall  
Paula Devine  
Kathleen & James Drummy  
Barbara Durham+  
Colleen & Paul Eiding  
Drs. Marjorie Marks Fond & Richard Z.  
Fond  
Dr. Jerome Hunt & Alvin Ford Jr.  
Matthew Goldsby  
Leslie & Robert Gordon+  
Melanie & James Hayes+  
Janice & Mark Kaspersen  
Bill & Priscilla Kennedy

Jack & Maureen Kolosky  
Daniel Castellaneta & Deborah Lacusta  
Howard & Patrick Leder-Morrow  
Elaine Lockhart-Mummery  
Philip McKinley  
Myron Meisel  
Selwyn & Laura Oskowitz  
Timothy & Jeanne Sakata Patterson  
Ellen K. Rentz  
Gregory Shapton & Barbara Rugeley  
George & Carolyn Seitz  
Liza & John Seneca  
James Sutorius  
Drs. Ligia and William Toutant  
Tyree & Les Wieder  
Richard Yaffe

## \$100+

Robert C. Anderson  
Annet Arakelian  
Anonymous  
Michael Barker+  
Joan Borgman & John  
Apicella+  
Amy Borgman & Michael  
Fiorillo  
Eileen Boyd  
Mark Bramhall  
Kaite Brandt+

Madelyn Cain-Inglese  
Mary Casey  
Karen Chiella+  
Nanci Christopher  
Linda & Andrew Cipes  
James Clover  
Stephanie & Dennis Cohen  
Kathy Connell & Daryl  
Anderson  
Karen Constine  
Julie & Bob Craft

Jim Crompton  
Sandra Cruze+  
Sondra Currie & Alan J. Levi  
Diana Daves & John  
McLaughlin  
Andrew R. DeMar Family  
Foundation  
Anonymous  
Michael Dorn  
Susie Edberg & Allen Grogan  
Ken Eddings

*Based on donations made between 5/23/22-5/23/23*  
*\* Gift directly supports Arts Education programming at Antaeus*  
*+ Indicates monthly sustaining donor*

|                              |                                |                                |
|------------------------------|--------------------------------|--------------------------------|
| Merle Edmondson              | Juliet Landau                  | Ruth & David Seigle            |
| Nicole Erb & Zach Reino      | Lanzafame Family Trust+        | Steven Seliger                 |
| Marni Farmer                 | Yvonne & Jason Lee             | Nayan Shah & Ken Foster        |
| Anonymous                    | Steven Llanusa                 | Cordelia Sherland              |
| Julia Fletcher               | Victor & Anna Luke             | Jeremy Shouldis                |
| Shari & Richard Foos         | Robert Machray                 | Stephanie Shroyer              |
| James Freed                  | Jill Maglione & Paul Van Dorpe | John & Juliana Sloan+          |
| Bill Frischman               | Abigail Marks+                 | Margaret & David Sloan         |
| Barbara & Fred Gable         | Tony Amendola & Judith Marx    | Adam J. Smith                  |
| Olga Garay-English+          | Jeffrey Gale & Julane Marx     | Peter James Smith              |
| Kevin Goetz                  | Patricia Mayer                 | Devon Sorvari & Steven Brand   |
| Linda & Mike Goldberg        | Nan McNamara & Lindsay         | Patricia & Lawrence Sparks     |
| Eric & Joyce Goldman         | Schnebly                       | Nadya Starr                    |
| Alexandra Goodman            | Roberta Medford                | Sheila & John Suarez           |
| Susan Gosden                 | Desirée Mee Jung & Brandon     | Elizabeth Swain                |
| Howard Gradet                | Kruhm                          | Kitty Swink & Armin            |
| Gretchen & Dick Grant        | Marlene F. Mills               | Shimerman                      |
| Craig Grilley                | Kerry Mohnike+                 | Elizabeth & Steven Swink       |
| Anonymous                    | Arianne Neumark                | Eileen T'Kaye & David Bischoff |
| William & Bernhild Heckmann  | Dan O'Connor & Edi             | Deborah Tepper                 |
| Beverly Higginson            | Patterson-O'Connor             | Skip Torvinen                  |
| Katie Hotchkiss+             | Jeff Padden                    | Steven Tran                    |
| Merrilee & Marty Howard      | Marie Pal-Brown & Garrett M.   | Elizabeth J von Schoff         |
| Carol Howell                 | Brown                          | William & Simone Warren        |
| Kevin Hudnell                | Linda Park                     | Michael Werner                 |
| Cynthia Huffman              | Ann Whitford Paul              | Stanley & Laurie Whitcomb      |
| Patricia & Richard Hughes    | Louise Peebles                 | Bernard White                  |
| Sheila & Milton Hyman        | Steven & Susan Peterman        | Patricia & Paul Willson        |
| Foundation                   | YWCA Glendale & Pasadena*      | Anonymous                      |
| John Iacovelli               | Lionel Pina                    |                                |
| Tom Jacobson & Ramone        | Marilyn Plutae                 |                                |
| Munoz                        | Deborah Podus                  |                                |
| Matthew Jaeger               | Lawrence Pressman              |                                |
| Jay Jee                      | Pamela Putnam & Cory           |                                |
| Andrew F. Johnson            | Whittaker                      |                                |
| Bjorn Johnson                | Anna Quirino-Miranda           |                                |
| Alice & Sam Johnston+        | Lorna Raver                    |                                |
| Denise Kautter               | Richard Reinhart               |                                |
| Dr. Kristine Penner Klein &  | Stephen & Melanie Rockwell     |                                |
| Steven Klein                 | John Allee & Kathleen Ross-    |                                |
| Marshall F. Kramer           | Allee                          |                                |
| Montgomery & Valerie         | Mark Saltzman                  |                                |
| Kuklenski                    | Christine Sanders              |                                |
| Alberto Isaac & Emily Kuroda | John Schuning & Gregory        |                                |
| Bonnie & Jim Lambert         | Ross+                          |                                |

*Based on donations made between 5/23/22-5/23/23*  
*\* Gift directly supports Arts Education programming at Antaeus*  
*+ Indicates monthly sustaining donor*



## STAFF

PRODUCING EXECUTIVE DIRECTOR

Ana Rose O'Halloran

ARTISTIC DIRECTOR

Bill Brochtrup

DIRECTOR OF OPERATIONS

Alvin Ford, Jr.

BOOKKEEPER

Amy Michner

EXECUTIVE ASSISTANT

Courtney Agustin

PUBLICIST

Lucy Pollak

## BOARD OF DIRECTORS

Evie DiCiaccio, Chair  
Charlie Bohlen, Secretary  
Laura Seigle, Treasurer

Sonja Berggren  
Bill Brochtrup  
Dawn Didawick  
David Gindler  
Tamara Krinsky  
Desirée Mee Jung  
Ana Rose O'Halloran  
Ara Oshagan  
Clarissa Park  
Lloyd Roberson II  
Adam J. Smith  
Reba Thomas  
Debra Thompson  
Arlene Vidor  
April Webster

### BOARD EMERITUS

Stuart Berton  
Bob Craft  
Mary Lambert  
Jack Walker

## PRODUCTION & FRONT OF HOUSE

PRODUCTION MANAGER

Zach Phaneuf

MASTER ELECTRICIAN

Kai Hirota Magee

COSTUME ASSISTANT

Jessica Osorio

SCENIC PAINTER

Katie Iannitello

CONSTRUCTION

Ryan Bauman,  
Nic Dagraca, Jeff Goins,  
Pernell Langorne III

ELECTRICIANS

Ryan Baker, David Bulen,  
Vadim Gorbaty, Cammie Dawson,  
Jeremy Grinblat,  
Ilana Cusack-Mercedez

PATRON EXPERIENCE ASSOCIATES

Casey Collaso, Juls Hoover,  
Lauren Martin-Zumaeta, Kallie Pong,  
Jessaica Shields

# COMPANY MEMBERS

John Achorn, Bernard K. Addison, Rhonda Aldrich, John Allee, Heather Allyn, Tony Amendola, John Apicella, Ben Atkinson, Tessa Auberjonois, Paul Baird, Gigi Bermingham, Daniel Bess, Daniel Blinkoff, John Bobek, Andrew Borba, Chad Borden, Christopher Breyer, Bill Brochtrup, Anne Gee Byrd, Nick Cagle, Jane Carr, Jon Chaffin, Emily Chase, Kendra Chell, Shannon Lee Clair, Josh Clark, Avery Clyde, Barry Creyton, JD Cullum, Paul Culos, Nicholas D'Agosto, Gregg T. Daniel, Julia Davis, Jason Delane Lee, Ramón de Ocampo, John DeMita, David DeSantos, Seamus Dever, Etta Devine, Gabriel Diani, Dawn Didawick, Francia DiMase, Mark Doerr, Daniel Dorr, Nike Doukas, Sarah Drew, Cherish Monique Duke, Paul Eiding, Nicole Erb, Terry Evans, Scott Ferrara, James Ferrero, Martin Ferrero, Karianne Flaathen, Julia Fletcher, Bo Fexworth, Jeff Thomas Gardner, Matthew Goldsby, Robert Goldsby, Alexandra Goodman, Eve Gordon, Emily Goss, Belen Greene, Ellis Greer, Harry Groener, Matthew Grondin, Arye Gross, Tim Halligan, Simon Helberg, Alexandra Hellquist, Steve Hofvendahl, Shannon Holt, Sally Hughes, Alberto Isaac, Antonio Jaramillo, Judy Louise Johnson, Dylan Jones, Verilyn Jones, Gerard Joseph, Luis Kelly-Duarte, Connor Kelly-Eiding, Michael Kirby, Lily Knight, Tamara Krinsky, Chelsea Kurtz, Mildred Marie Langford, Adrian LaTourelle, Paul Lazarus, Jay Lee, Emily Lenkeit, Ian Littleworth, Melanie Lora, Henri Lubatti, Jazzlyn K. Luckett, Aaron Lyons, Jill Maglione, Abigail Marks, Leo Marks, Kwana Martinez, Anna Mathias, Kellie Matteson, Dakin Matthews, Sandra McClain, Don McManus, Anne McNaughton, Mike McShane, Desirée Mee Jung, Bill Mendieta, Peter Mendoza, Adam Meyer, Lynn Milgrim, Richard Miro, Elyse Mirto, Rosalyn Mitchell, Ned Mochel, Rebecca Mozo, Rob Nagle, Ann Noble, Jeffrey Nordling, Catia Ojeda, Linda Park, Melinda Peterson, Robert Pine, Erin Pineda, Lawrence Pressman, Philip Proctor, John Prosky, Deborah Puette, Anna Quirino-Miranda, Carolyn Ratteray, Lloyd Roberson II, Spencer Rowe, Jeanne Sakata, Ned Schmidtke, Liza Seneca, Armin Shimerman, Stephanie Shroyer, John Sloan, Adam J. Smith, Kurtwood Smith, Peter James Smith, Devon Sorvari, Paul Stanko, Janelen Steinger, Joanna Strapp, Susan Sullivan, James Sutorius, Elizabeth Swain, Joel Swetow, Kitty Swink, Jeanne Syquia, Reba Thomas, R. Scott Thompson, Danielle Thorpe, Jeff Torres, Jocelyn Towne, Rebekah Tripp, Marcelo Tubert, Peter Van Norden, Tim Venable, Geoffrey Wade, Todd Waring, Patrick Wenk-Wolff, Laura Wernette, Amelia White, Karen Malina White, Abby Wilde, Jules Willcox, Paul Willson, Alicia Wollerton, Zoe Yale, Kelvin Yu, Buck Zachary, Josh Zuckerman

## TITANS

*Specially designated company members who have contributed above and beyond!*

John Achorn, John Apicella, Fran Bennett, Ralph Drischell, Robert Goldsby, Gregory Itzin, Dakin Matthews, Anne McNaughton, Rob Nagle, Angela Paton, John Sloan, Kitty Swink



*Deborah Puette in The Little Foxes (2018), Photo by Geoffrey Wade Photography.*

## SUBSCRIBERS HAVE MORE FUN!

- SAVE UP TO 25% ON ALL TICKETS  
(INCLUDING EXTRA TICKETS FOR FRIENDS)

- UNLIMITED FREE EXCHANGES

- WAIVED HANDLING FEES

- ACCESS THE BEST AVAILABLE  
SEATS BEFORE THE GENERAL PUBLIC

[ANTAEUS.ORG/SUBSCRIBE](https://antaeus.org/subscribe)  
818.506.1983

## SUBSCRIBE NOW FOR \$120

# 2023/24 SEASON

## SHE

A WORLD PREMIERE

WRITTEN BY

MARLOW WYATT

DIRECTED BY

ANDI CHAPMAN

OCT 15 - NOV 20, 2023

## THE WINTER'S TALE

WRITTEN BY

WILLIAM SHAKESPEARE

DIRECTED BY

ELIZABETH SWAIN

FEB 4 - MAR 11, 2024

## NORA

A STAGE VERSION OF

IBSEN'S A DOLL'S HOUSE BY

INGMAR BERGMAN

TRANSLATED AND ADAPTED BY

FREDERICK J. MARKER &

LISE-LONE MARKER

DIRECTED BY CAMERON WATSON

APR 21 - MAY 26, 2024

## THE IMPORTANCE OF BEING EARNEST

WRITTEN BY

OSCAR WILDE

DIRECTED BY

GREGG T. DANIEL

JUL 14 - AUG 19, 2024

